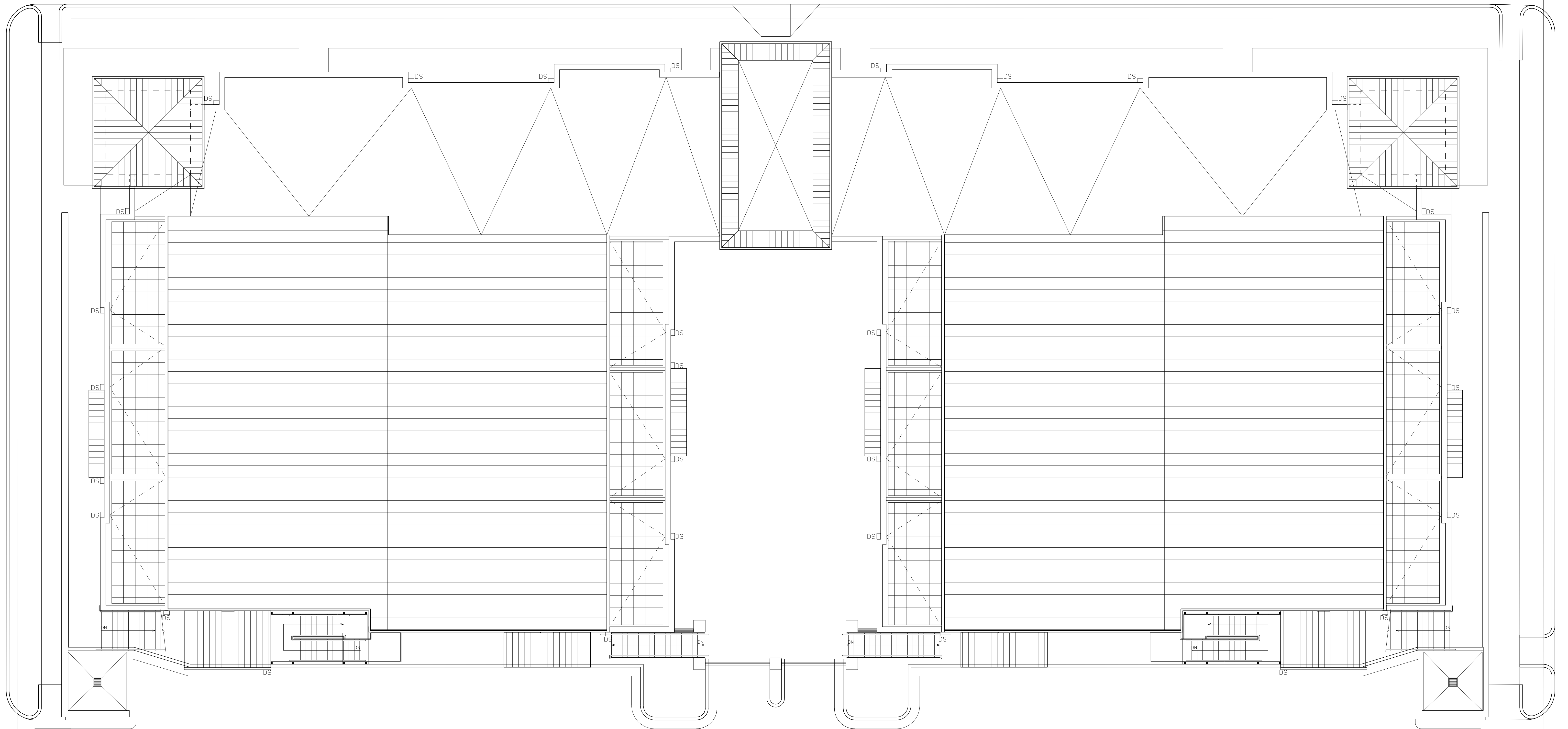
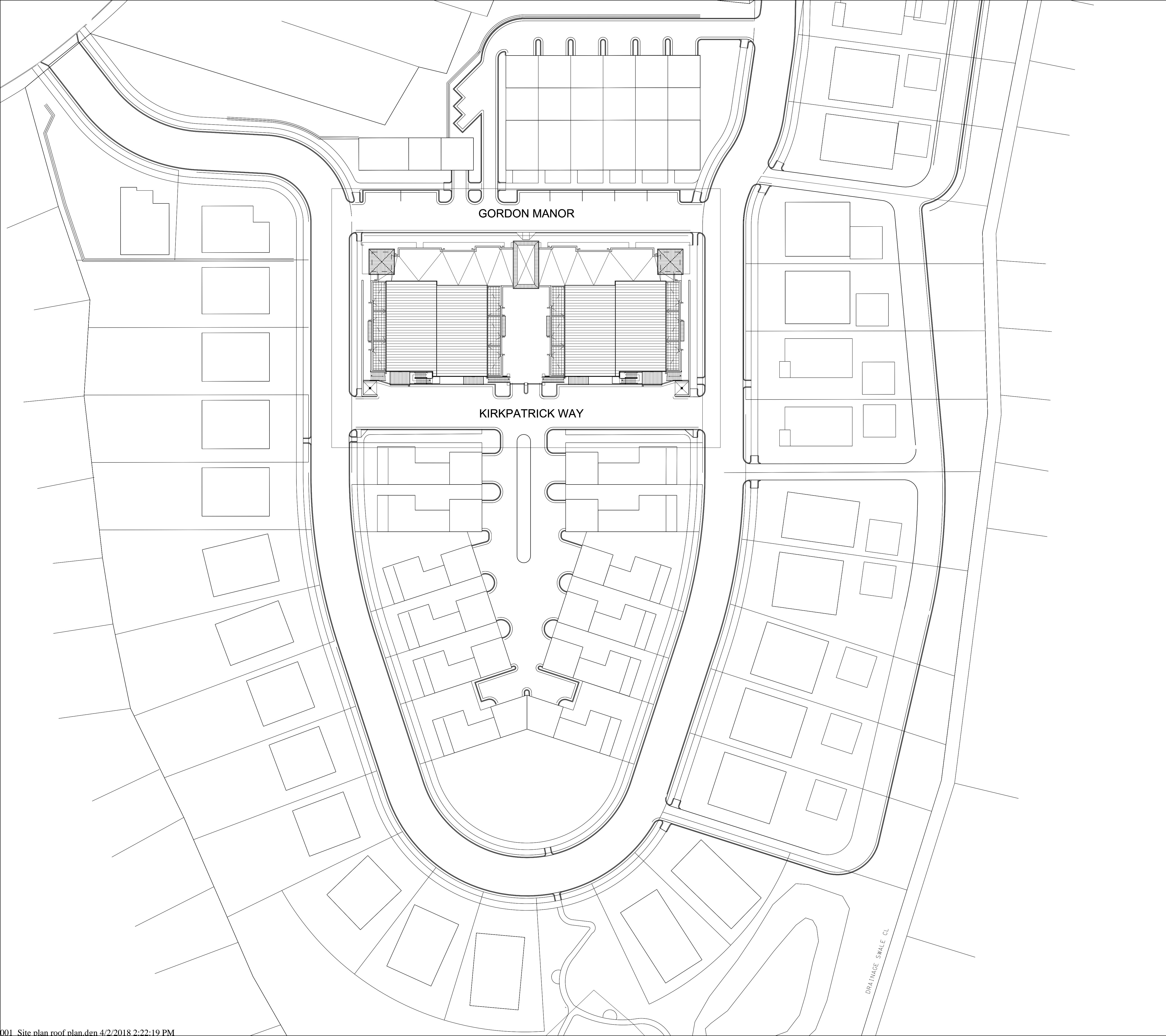


GORDON MANOR



KIRKPATRICK WAY

SITE PLAN
Scale 1/8" = 1'-0"
A0.2



ZONING	
SITE	
ZONING:	I-1
NUMBER OF UNITS:	32
RESIDENTIAL FLOOR AREA:	19,487 SF
PARKING REQUIRED:	.99 SPACES PER UNIT = 32 SPACES
PARKING PROVIDED:	62 SPACES PROVIDED
BUILDING	
A. OCCUPANCY CLASSIFICATION:	RESIDENTIAL R-2
B. TYPE OF CONSTRUCTION:	TYPE V (UNPROTECTED)
C. SPRINKLER SYSTEM TYPE:	NFPA 13R
D. BUILDING AREA:	19,487 SF GROSS
E. TOTAL BUILDING AREA:	48,530 SF
STORIES:	3 STORY W/ BASEMENT
ROOF TOP DECKS:	2,858 SF
NUMBER OF BUILDINGS:	ONE
F. OCCUPANT LOAD FOR EXITING:	98
G. MAXIMUM FLOOR LIVE LOAD IN P.S.F.:	80 PSF
H. INDICATE TOTAL AMOUNT OF EACH IN THIS PROJECT:	
ELEVATORS (TO INCLUDE FREIGHT):	ONE ESCALATORS: 0
MAIN LIFTS: 0	DUMBWAITERS: 0 WHEELCHAIRS LIFTS: 0
I. EGRESS CAPACITY CALCULATIONS:	
TYPICAL RESIDENTIAL FLOOR =	19,487 SF / 200
TOTAL OCCUPANCY =	98 PERSONS
EGRESS REQUIRED:	98 PERSONS (OCCUPANCY) X 0.3 (EGRESS WIDTH PER PERSON SERVED-STAIRS) = 29.4 INCHES USE 44" MINIMUM AT STAIR.
PROJECT DESCRIPTION	
POST-TENSIONED CONCRETE SLAB WITH WOOD FRAME CONSTRUCTION. STEEL COLUMNS, BEAMS AND JOISTS AT ALL FLOORS AND ROOF. LOAD BEARING WOOD FRAME MASONRY VENEER WALLS AT PERIMETER.	

SITE PLAN	
Scale	A0.1
1/32" = 1' 0"	